

MASLOW'S

# MORTIMER HOUSE

Meetings & Events



LIVE WELL

WORK WELL

Tel: +44 (0)20 7139 4401

Email: [events@mortimerhouse.com](mailto:events@mortimerhouse.com)

37-41 Mortimer Street,

Fitzrovia, London, W1T 3JH

# CREATE, WORK AND UNWIND

Housed in a majestic eight-floor Art Deco building in the heart of London's Fitzrovia, Mortimer House is a destination for those who wish to create, work and unwind.

Founded upon a philosophy of providing holistic balance in work and life, it is intended to satisfy the needs of both the head and the heart. Intuitively designed meeting rooms, terraces, event spaces and a Rooftop Bar effortlessly meld mid-century design touches with the classicism of the original building.

Mortimer House is also home to ground floor restaurant Mortimer House Kitchen, which is open to the public and serves exceptional Mediterranean cuisine.



MORTIMER  
STREET



# ROOMS FOR UP TO EIGHT

We have multiple rooms suitable for parties up to eight guests (or ten, by special arrangement) for meetings, workshops or private dining. Each room ranges in character and style from the unpretentious and relaxed, to the timelessly sophisticated.

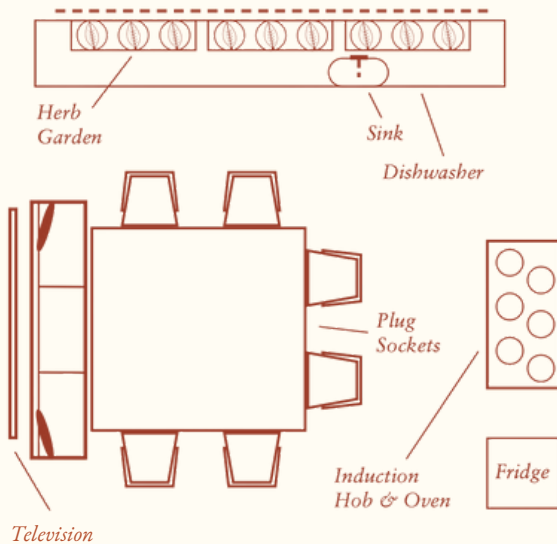
All of our rooms include technical support for presentations and a selection of dining menus from Mortimer House Kitchen.

All of these rooms are all conveniently available to hire by the hour.



# KITCHEN TABLE

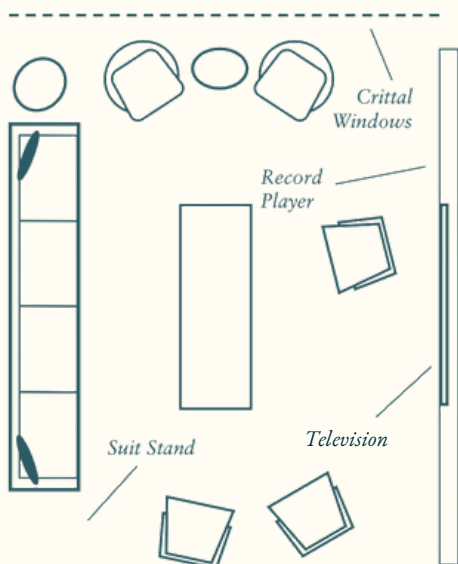
A home inspired kitchen for those round table meetings that require some hearty, home-cooked food delivered from our restaurant, or created bespoke by a dedicated on-hand chef. Private dining & cooking classes are available upon request.





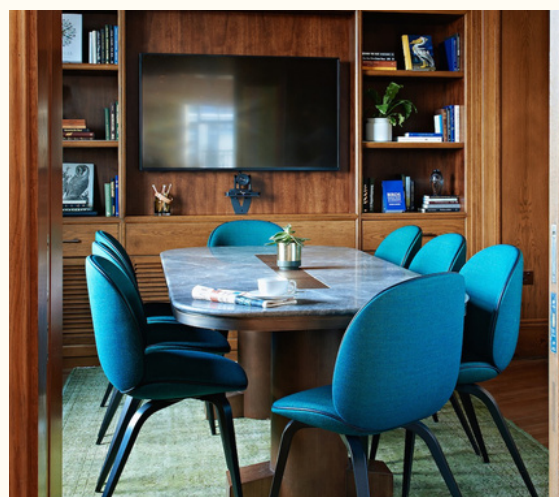
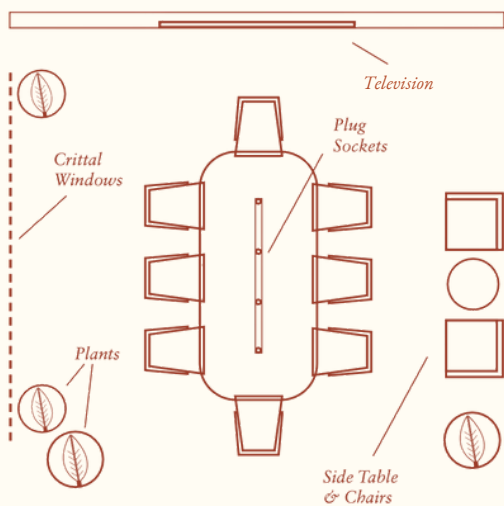
# DRAWING ROOM

The Drawing Room is an understated lounge designed for those relaxed meetings where inspiration flows naturally in a less formal environment. With laid back chairs, a big velvet sofa and bright, natural light, it's ideal for those lengthy discussions in need of tea and biscuits.



# PRIVATE DINING ROOM

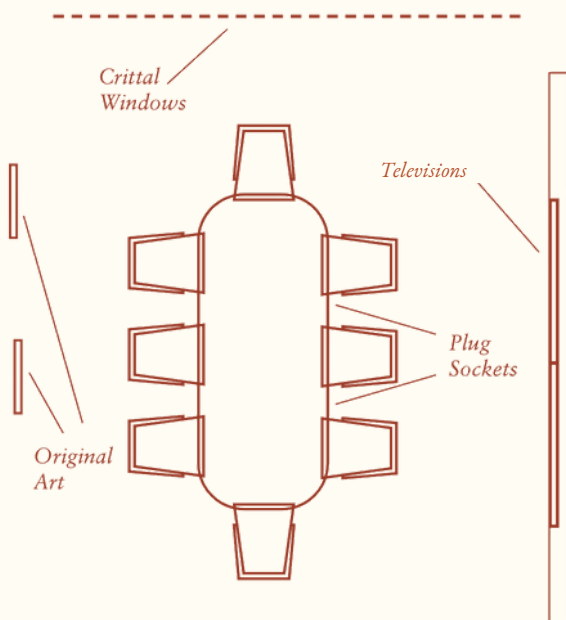
Accessible via our member's Den, this versatile space with a mid-century finish is perfect for intimate meetings, exclusive lunches and cosy dinners. The room includes a marble table with discreetly integrated power sockets and large windows with views across Fitzrovia.





# BOARDROOMS 1 & 2

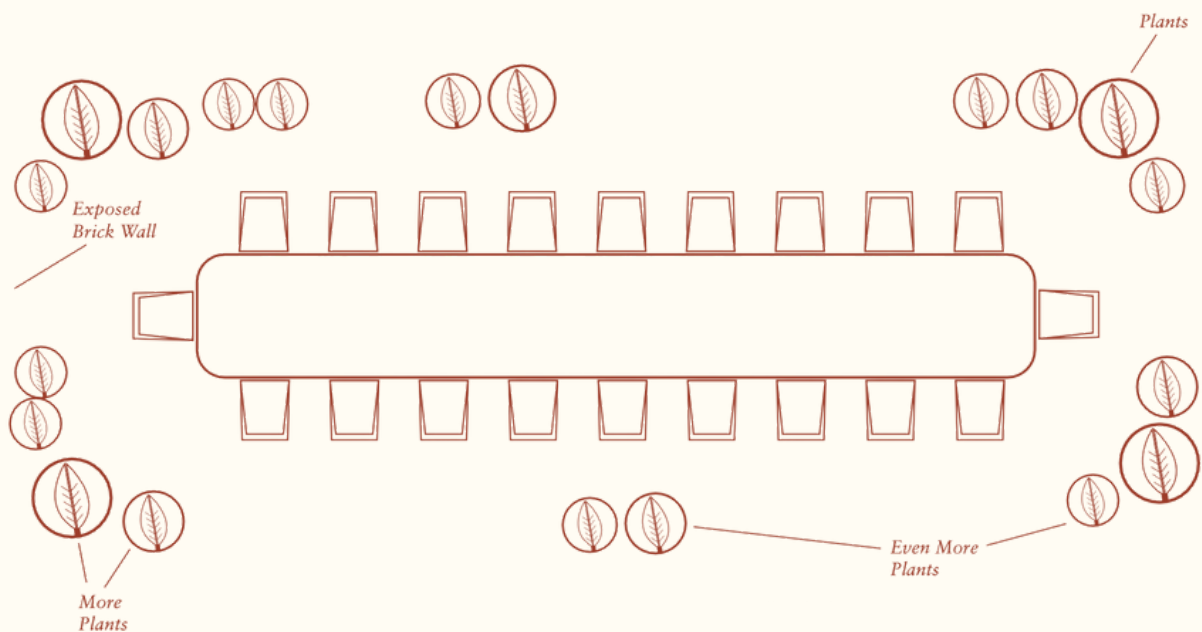
The spacious, more traditional Boardrooms combine classically inspired luxurious interiors with all of today's technological needs. These beautiful spaces are ready for video conferencing and are equipped with power sockets tucked away around the central table.



# THE CONSERVATORY

The Conservatory brings a touch of the Mediterranean countryside to the city. This country garden-inspired dining room in the heart of London forms part of our ground floor restaurant, Mortimer House Kitchen, melding the authentic flavours from the length and breadth of the region.

Available for semi-private dining and group bookings, it's perfect for celebratory dinners and larger gatherings. Situated near the open plan kitchen, the Conservatory draws in all the ambience from the buzzing restaurant, while boasting festoon lights and a star-gazing glass ceiling to light up any night.









# LOFT & GALLERY

Our penthouse style Loft & Gallery sits on the sixth floor of Mortimer House. With its own private balcony overlooking Fitzrovia, views of the BT Tower take centre stage amidst the cityscape.

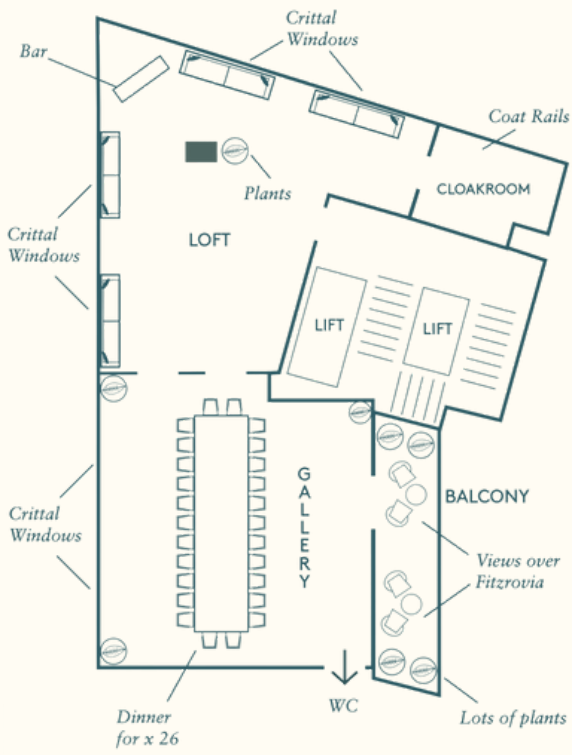
Awash with natural light by day and alive with the city lights by night, the space is lined with original Crittal windows. This versatile space can accommodate a variety of events, such as standing receptions, yoga and brunch, talks, presentations and even intimate dinners.

Menus are fresh and seasonal, showcasing highlights from our acclaimed Mediterranean restaurant on the ground floor.

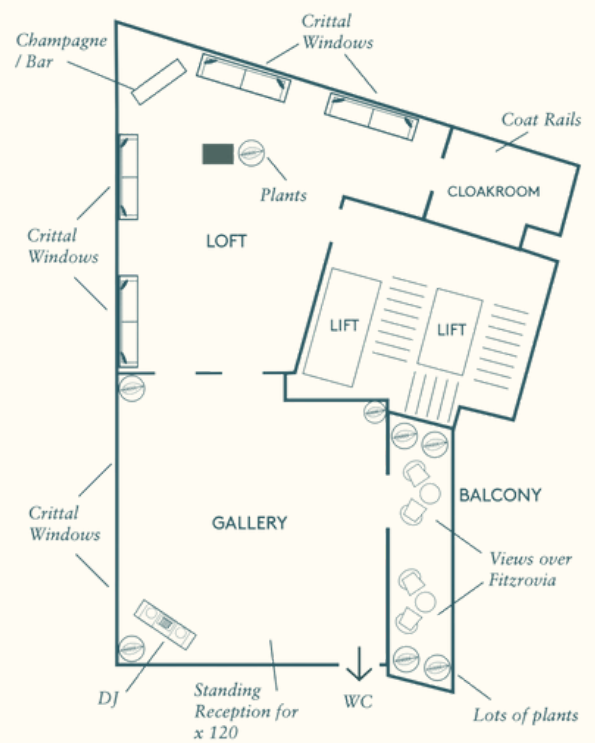




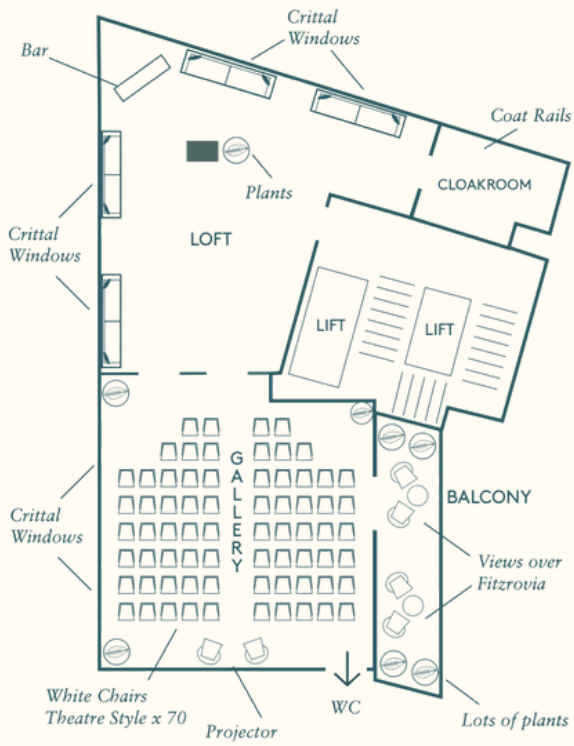
# BOARDROOM



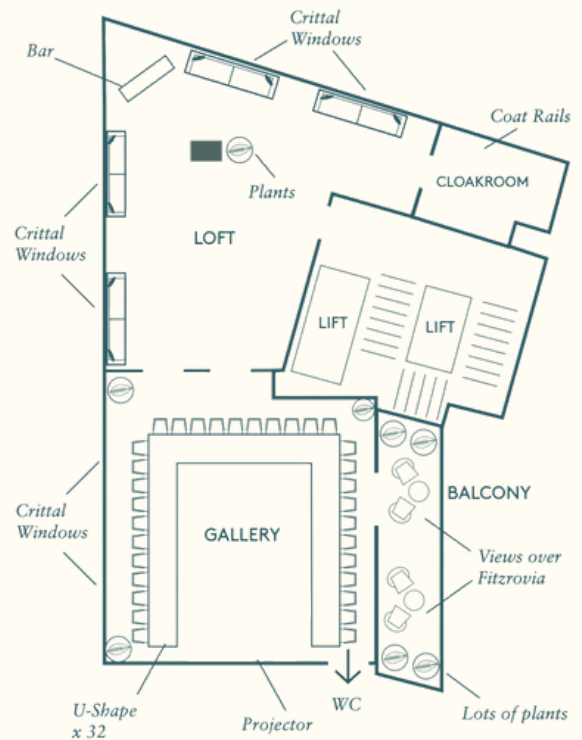
# STANDING



# THEATRE

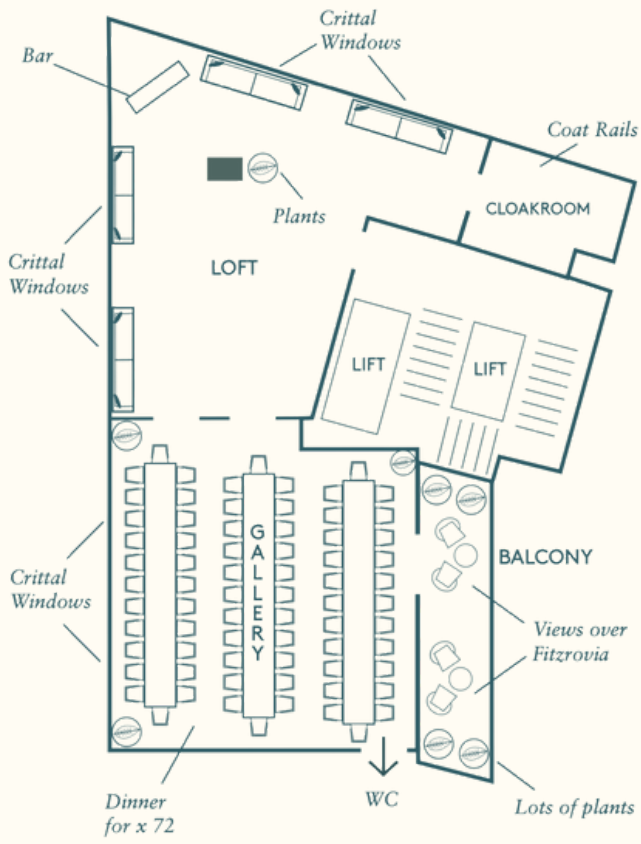


# U-SHAPE





# BANQUET



## OUR ROOMS AT A GLANCE

<b>KITCHEN TABLE</b>	Boardroom	Private Dining	Workshop
<i>Capacity</i>	8-10	8	8
<b>DRAWING ROOM</b>	Casual Meeting		
<i>Capacity</i>	8-10		
<b>PDR</b>	Boardroom	Private Dining	Casual Meeting
<i>Capacity</i>	8	8	8-10
<b>BOARDROOM 1</b>	Boardroom		
<i>Capacity</i>	8-10		
<b>CONSERVATORY</b>	Private Dining		
<i>Capacity</i>	20		
<b>LOFT &amp; GALLERY</b>	Boardroom	Private Dinner	Standing
<i>Capacity</i>	26	72	120
<b>LOFT &amp; GALLERY</b>	U-Shape	Cabaret	Theatre
<i>Capacity</i>	32	35	70
<b>LOFT &amp; GALLERY</b>	Hollow Square	Yoga	Wedding
<i>Capacity</i>	36	20	54



MASLOW'S  
MORTIMER  
HOUSE



*We look forward to hosting you soon.*